



Tree inclined

## Arboricultural Impact Assessment

- **Development at 10 Edward Street, Gordon and nearby trees.**

Jerry Romanski  
Arborist / Consultant  
*B.Sc (Hons),  
Ass. Dip. App. Sc.(Hort/Arb)*

29 Winston Avenue  
Seven Mile Beach TAS. 7170

M: 0419 363 011  
jerry@treeinclined.com

29/06/2026

## Contents

1. Terms of reference .....	3
2. Summary.....	3
3. Proposed development and nearby trees.....	4
3.1 Impact of the works on nearby trees.....	5
4. Tree protection notes.....	11

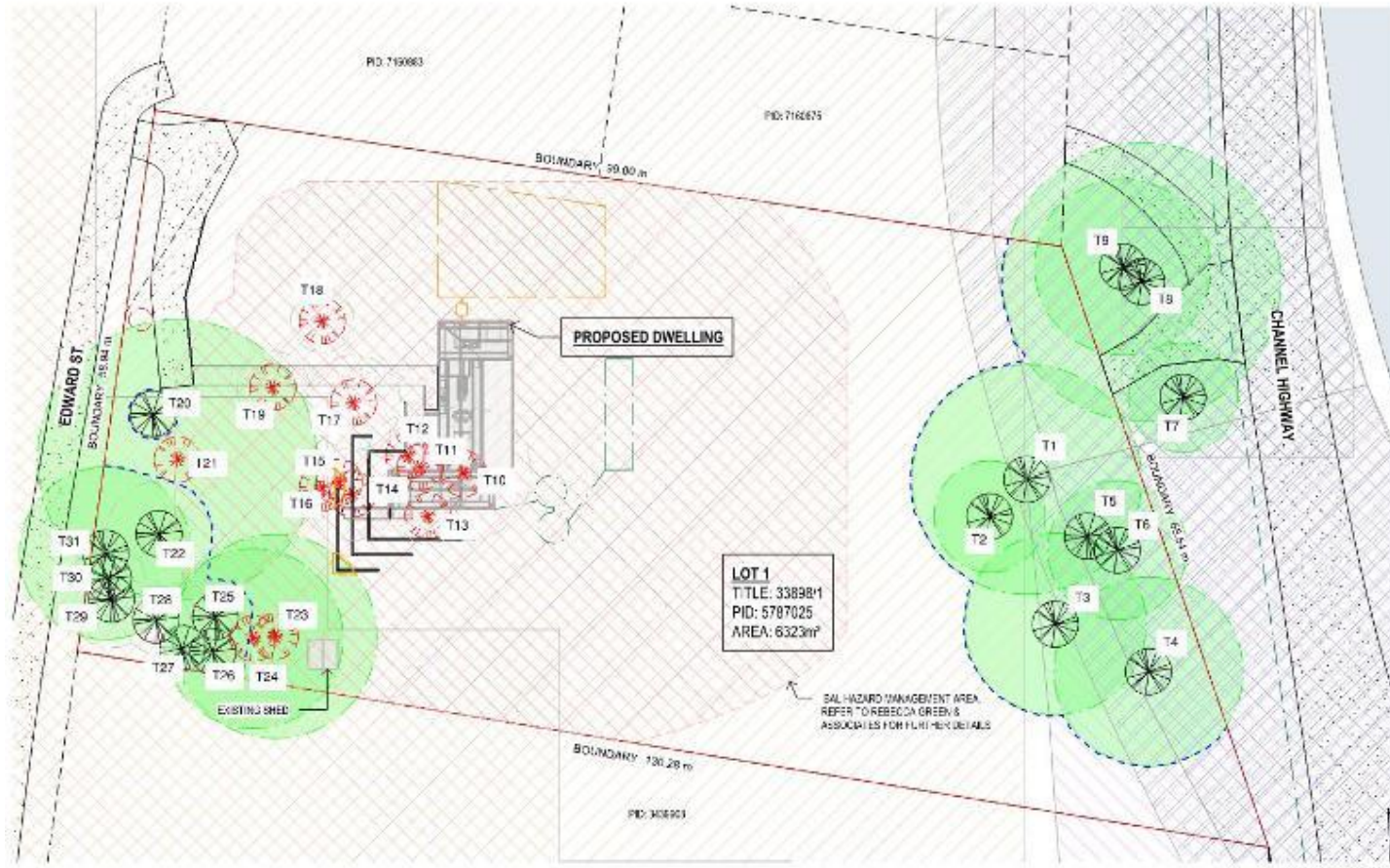
## 1. Terms of reference

- This assessment of potential impact by proposed residential development at 10 Edward Street, Gordon was prepared for Giles Tyler, the property owner.
  - Trees included in this report are native species with trunk diameter ranging from 0.15 m to 1.46 m at 1.4m above the ground and growing within 15 m of the proposed works.
- Ground based inspection of the trees was completed on 6/06/2026.
- Drawing used in this assessment was:
  - Locality Plan – High and Low Conservation Value Tree, Dwg 2025-332 A02/A11 Rev J by Engineering Plus
- This assessment adopted the data provided in the ECOTas natural values report for 10 Edward Street,, Gordon, 8/04/2026.

## 2. Summary

- This assessment includes 31 trees, including the tall stump of the storm damaged T30.
- Retention of 17 trees is possible within the scope of the proposed works.
  - Engagement of a project arborist is recommended to provide further advice and services during the project
- Removal of 13 trees would be necessary.
  - This includes 3 very high conservation value stringybarks (T21, T23 and T24) and 2 stringybarks with trunk diameter smaller than 0.25 m.

### 3. Proposed development and nearby trees.



LEGEND	VEGETATION TYPE AND COMMENTS	QTY
	HIGH OR VERY HIGH CONSERVATION VALUE TREE WITH TREE PROTECTION ZONE SHOWN AS A CIRCLE AROUND THE TREE. REFER TO WOODCOTT LAND SERVICES TREE PLAN FOR FURTHER INFORMATION.	12
	LOW CONSERVATION VALUE TREE WITH TREE PROTECTION ZONE SHOWN AS A CIRCLE AROUND THE TREE. REFER TO WOODCOTT LAND SERVICES TREE PLAN FOR FURTHER INFORMATION.	18
	TREE TO BE REMOVED. REFER TO TREE INCLINED AND/OR COLL. TURAL IMPACT ASSESSMENT FOR FURTHER INFORMATION.	19


Figure 1. Mark up of the Engineering Plus Locality Plan. Tree nominal root zones are shown with green dashed lines / shaded green. Suggested TPZ area is marked with dashed blue lines. Trees with red icons would need to be removed (see Section 3.1). Note – the total of tree to be removed was adjusted in the above mark-up.


### 3.1 Impact of the works on nearby trees

Column headings in the table below.

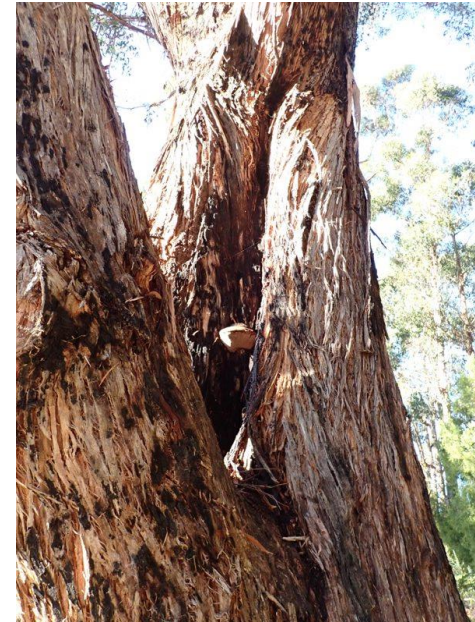
Tree	- tree number in Figure 1
Species	- botanical name of tree
DAB	- trunk diameter above root buttresses
DSH	- trunk diameter over bark at approximately 1.4m above the ground
SIG.	- conservation value as guided by the Kingborough Biodiversity Offset Policy. H – high, VH – very high
V/S	- assessment of the tree’s vitality and structure: Good – G, Fair – F, Poor - P
NOTES	- key points affecting the tree’s potential for maintenance
SRZ	- structural root zone radius (m)
NRZ	- nominal root zone radius (m)*
ENCROACHMENT	- nature of encroachment over the NRZ
LEVEL	- level of encroachment over the NRZ: Minor (up to 10%); Moderate (11% – 20%); Major (>20%)
RET.	- retention recommendation (Y – yes, can be retained; N – no, removal recommended / desired)
	<ul style="list-style-type: none"> <li>- SRZ and NRZ dimensions were guided by AS 4970-2025, Protection of trees on development sites.</li> </ul>



TREE	SPECIES	DAB	DSH	SIG.	V/S	NOTES	SRZ	NRZ	ENCROACHMENT	LEVEL	RET.
T1	E. globulus	1.46	1.03	VH	F/F	Twin from ground level, main trunk leans to NE. Low volume of decay in lower trunk. Long lanky scaffolds, large low dead branch to N.	3.9	12.4	N/A		Y
T2	E. globulus	0.6	0.50	H	P/F	Multi-leader from ground level. Southern leader has died. Borer damage.	2.7	6.0	N/A		Y
T3	E. globulus	0.92	0.81	VH	F/F	Twin from near ground, southern leader broken at 5m.	3.2	9.7	N/A		Y

TREE	SPECIES	DAB	DSH	SIG.	V/S	NOTES	SRZ	NRZ	ENCROACHMENT	LEVEL	RET.
T4	<i>E. globulus</i>	0.9	0.85	VH	G/G	Low volume of decay in lower trunk.	3.2	10.2	N/A		Y
T5	<i>E. globulus</i>	0.28	0.23	L	G/F	Stump regrowth	1.9	2.8	N/A		Y
T6	<i>E. globulus</i>	0.75	0.63	H	F/F	Decay in mid trunk.	2.9	7.6	N/A		Y
T7	<i>E. globulus</i>	0.59	0.49	H	G/G	Existing driveway cutting to north.	2.7	5.9	N/A		Y
T8	<i>E. globulus</i>	1.57	1.46	VH	F/F	Decay in lower trunk and low scaffolds. Large dead branches in lower crown to NE. Existing driveway cutting to north through east to south.	4.0	15.0	N/A		Y
											
T9	<i>E. globulus</i>	0.98	0.79	VH	P/F	Trunk leans slightly and crown biased to N. Upper crown in advanced decline. Existing driveway cutting to north through east to south.	3.3	9.5	N/A		Y
T10	<i>E. obliqua</i>	0.75	0.6	L	G/P	Borer damage	2.9	7.2	Within house footprint	High - >50%	N - excessive root damage expected

TREE	SPECIES	DAB	DSH	SIG.	V/S	NOTES	SRZ	NRZ	ENCROACHMENT	LEVEL	RET.
T11	E. obliqua	0.33	0.29	L	G/G		2.1	3.5	Within house footprint	High - >50%	N - excessive root damage expected
T12	E. obliqua	0.47	0.36	L	G/G		2.4	4.3	Soil profile cut, retaining wall	High - >50%	N - excessive root damage expected
T13	E. obliqua	0.29	0.26	L	G/G		2.0	3.1	House footprint, soil profile cut, retaining wall	High - >50%	N - excessive root damage expected
T14	A. dealbata	0.48	0.42	L	G/F	Bark including bifurcation at 7m. Crown extends above house footprint.	2.4	5.0	House footprint, soil profile cut, retaining wall	High - >50%	N - excessive root damage expected
											
T15	E. obliqua	0.22	0.15	L	G/G		1.8	1.8	Soil profile cut, retaining wall	High - >50%	N - excessive root damage expected
T16	E. obliqua	0.23	0.15	L	G/G		1.8	1.8	Soil profile cut	High - 30%	N - excessive root damage expected

TREE	SPECIES	DAB	DSH	SIG.	V/S	NOTES	SRZ	NRZ	ENCROACHMENT	LEVEL	RET.
T17	E. obliqua	0.48	0.42	L	G/F	Damaged primary root to NE.	2.4	5.0	Soil profile cut, retaining wall, path to house	High - 35%	N - excessive root damage expected
T18	A. melanoxylon	0.34	0.28	L	G/G		2.1	3.4	N/A		N – undesirable for retention by client
T19	E. obliqua	0.38	0.32	L	G/F		2.2	3.8	Path	High - >50%	N - excessive root damage expected
T20	E. obliqua	0.24	0.22	L	G/G		1.8	2.6	N/A		Y
T21	E. obliqua	1.32	1.37	VH	F/P	Decay in lower trunk. Historic failure of a very large leading branch. Another leader is dead. Bark included at attachment of leader to N over the driveway.	3.7	15.0	Driveway, soil profile cut	High - 30%	N - Hazardous structure, high level of root damage expected



TREE	SPECIES	DAB	DSH	SIG.	V/S	NOTES	SRZ	NRZ	ENCROACHMENT	LEVEL	RET.
T22	E. obliqua	0.55	0.47	L	G/F	There is scope to reduce crowns to upper crown epicormics, if desired.	2.6	5.6	N/A		Y
											
T23	E. obliqua	1.01	0.92	VH	G/F	Leans slightly to E. Historic fire damage to trunk and branch bark. Long scaffolds to E. Large low dead branch.	3.3	11.0	Soil profile cut, retaining wall	Low - 1%	N – undesirable for retention by client
											

TREE	SPECIES	DAB	DSH	SIG.	V/S	NOTES	SRZ	NRZ	ENCROACHMENT	LEVEL	RET.
T24	E. obliqua	0.96	0.81	VH	G/G	Removal of neighbouring tree 23 will substantially change wind patterns and crown loading of tree 24, increasing potential for branch failure and elevate the potential for wind-throw.	3.3	9.7		N/A	N – undesirable for retention by client (see notes)
T25	E. obliqua	0.48	0.34	L	G/G		2.4	4.1	N/A		Y
T26	E. obliqua	0.49	0.35	L	G/G		2.5	4.2	N/A		Y
T27	E. obliqua	0.24	0.2	L	G/F		1.8	2.4	N/A		Y
T28	E. obliqua	0.35	0.3	L	G/F		2.1	3.6	N/A		Y
T29	E. obliqua	0.49	0.43	L	G/G		2.5	5.2	N/A		Y
T30	E. obliqua		0.32	L		Trunk broken at 6m - tall stump only remains	0.0	3.8			N/A
T31	E. obliqua	0.88	0.78	VH	G/G		3.1	9.4	N/A		Y

#### 4. Tree protection notes

- I. This assessment assumes that all works activities will be confined to the boundaries of 10 Edward Street.
  
- II. Establishment of combined tree protection zones is suggested except for T20, as shown in Figure 1 (dashed blue lines).
  - a. I recommend engagement of a project Arborist to oversee the establishment of the TPZs and provide general tree protection advice and services during the build.
  
  - b. TPZs must be clearly marked on site with 1.2m high stakes and barrier tape as a minimum.
  
  - c. The TPZs primary purpose is the protection of the trees' roots and root zone soil. The TPZs shall exclude: vehicle and machinery traffic, storage of building materials, storage or disposal of building waste and soil stockpiles.
  
  - d. Foreseeable encroachment by vehicle traffic over the formed entry off the Channel Highway over the NRZ of T1, T7, T8 and T9 has been considered by this assessment. The need to utilise this entrance during the works should be communicated to the Project Arborist.

